

OKLAHOMA DEPARTMENT OF TRANSPORTATION					
FED. ROAD DIST. NO.	STATE	PROJ. NO.	FISCAL YEAR	SHEET NO.	TOTAL SHEETS
	OKLA.				
DESCRIPTION			REVISIONS	DATE	

SECTION CORNER - O.D.O.T. D-22-488  
 FOUND AND ACCEPTED A #4 BAR WITH "PLS 1444" CAP.  
 LOCATION IS IN AGREEMENT WITH OKLAHOMA CERTIFIED  
 CORNER RECORD FILED IN 1988 AND IS IN HARMONY  
 WITH EXISTING IMPROVEMENTS. THE REFERENCE  
 MONUMENTS WERE FOUND AND VERIFIED.

SECTION CORNER - O.D.O.T. D-22-493  
 FOUND AND ACCEPTED A #4 BAR WITH AN  
 UNREADABLE CAP. LOCATION IS IN AGREEMENT WITH  
 OKLAHOMA CERTIFIED CORNER RECORD FILED IN 1988  
 AND IS IN HARMONY WITH EXISTING IMPROVEMENTS.  
 ONE OF THE REFERENCE MONUMENTS WERE FOUND AND  
 VERIFIED.

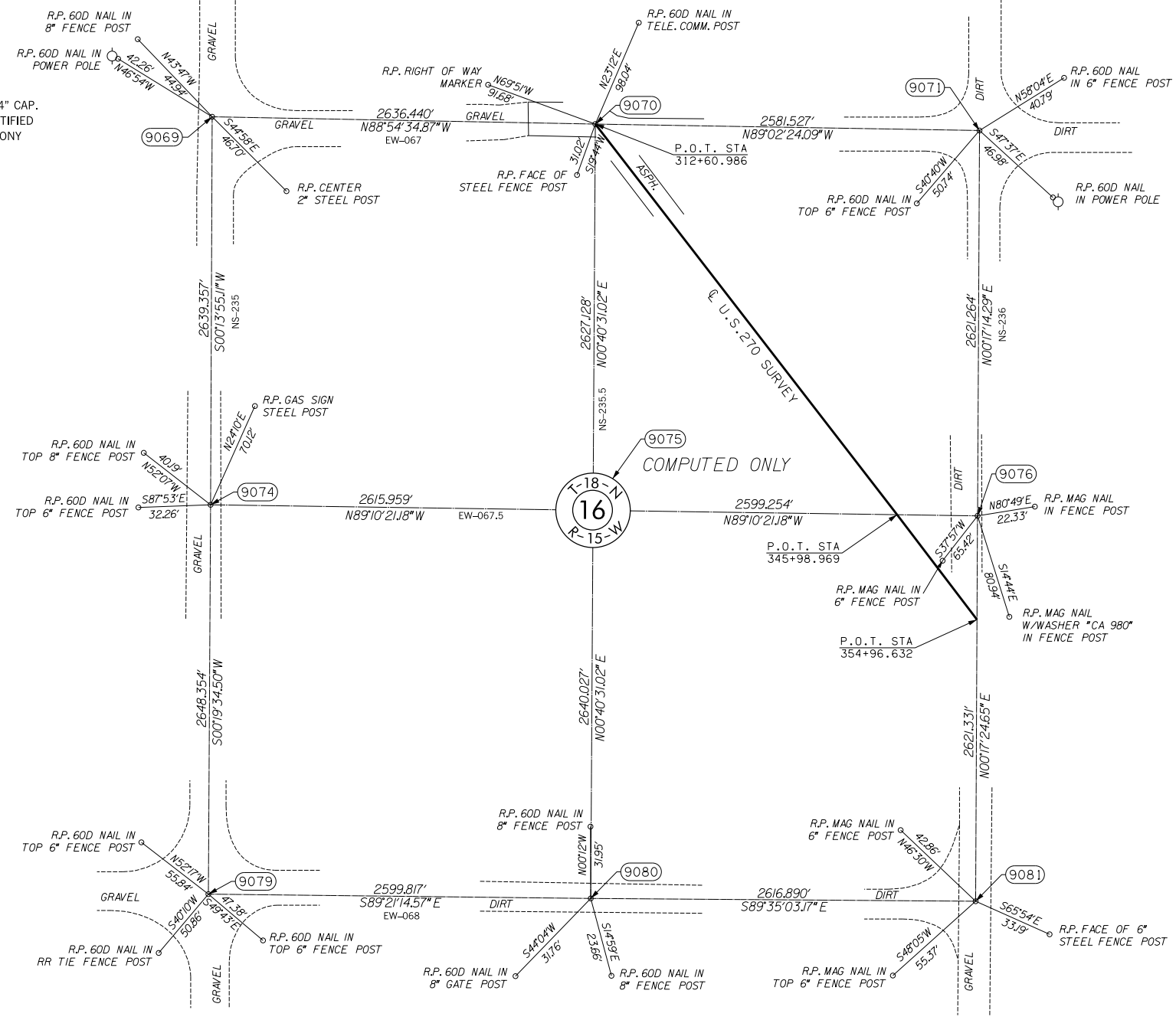
SECTION CORNER - O.D.O.T. D-22-496  
 FOUND AND ACCEPTED A #4 BAR. LOCATION IS IN  
 AGREEMENT WITH OKLAHOMA CERTIFIED CORNER  
 RECORDS FILED IN 2010 AND IS IN HARMONY WITH  
 EXISTING IMPROVEMENTS. TWO OF THE REFERENCE  
 MONUMENTS WERE FOUND AND VERIFIED.

SECTION CORNER - O.D.O.T. D-22-489  
 SET A #4 BAR WITH "CA 2054" CAP. LOCATION WAS  
 RE-ESTABLISHED USING EXISTING HIGHWAY PLANS. NO  
 OKLAHOMA CERTIFIED CORNER RECORD WAS ON FILE  
 FOR THIS LOCATION.

SECTION CORNER - O.D.O.T. D-22-490  
 FOUND AND ACCEPTED A #4 BAR WITH "CA 980" CAP.  
 LOCATION IS IN AGREEMENT WITH OKLAHOMA CERTIFIED  
 CORNER RECORD FILED IN 2010 AND IS IN HARMONY  
 WITH EXISTING IMPROVEMENTS. THE REFERENCE  
 MONUMENTS WERE FOUND AND VERIFIED.

SECTION CORNER - O.D.O.T. D-22-494  
 FOUND AND ACCEPTED A #4 BAR WITH "CA 980" CAP.  
 LOCATION IS IN AGREEMENT WITH OKLAHOMA CERTIFIED  
 CORNER RECORD FILED IN 2004 AND IS IN HARMONY  
 WITH EXISTING IMPROVEMENTS. THE REFERENCE  
 MONUMENTS WERE FOUND AND VERIFIED.

SECTION CORNER - O.D.O.T. D-22-498  
 FOUND AND ACCEPTED A #4 BAR WITH "CA 980" CAP.  
 LOCATION IS IN AGREEMENT WITH OKLAHOMA CERTIFIED  
 CORNER RECORDS FILED IN 2004 AND IS IN HARMONY  
 WITH EXISTING IMPROVEMENTS. THREE OF THE  
 REFERENCE MONUMENTS WERE FOUND AND VERIFIED.



SECTION CORNER - O.D.O.T. D-22-497  
 SET A #4 BAR WITH "CA 2054" CAP FOR CORNER.  
 LOCATION WAS RE-ESTABLISHED BY USING EXISTING  
 FENCE LINES RUNNING NORTH SOUTH AND 33 FEET  
 SOUTH OF FENCE CORNER POST. NO OKLAHOMA  
 CERTIFIED CORNER RECORDS WAS ON FILE FOR THIS  
 LOCATION.



SCALE:  
 1" = 500'

NOTE: REFERENCE'S SHOWN ARE NOT TO SCALE.

OKLAHOMA DEPARTMENT OF TRANSPORTATION			
SURVEY DIVISION			
PLS	KH		
DRAWN	CF,SK		
CHECKED	KH		
APPROVED	KH		
CREW	JH,SA,BH,DR	SWO 4600 (1)	PROJECT NO. 17671(34) SHEET NO. S35